



Engine	Weichai WD10G178E25
Gross Power	131 kW (176 hp / 178 ps) @ 1,850 rpm
Net Power	120 kW (161 hp / 163 ps) @ 1,850 rpm
Maximum Torque	830 N · m
Blade Capacity	10.4 m ³
Operating Weight	19,100 kg

B160CR BULLDOZER

B160CR SPECIFICATIONS >>>

ENGINE

Emission Regulation	Tier 2 / Stage II
Make	Weichai
Model	WD10G178E25
Gross Power	131 kW (176 hp / 178 ps) @ 1,850 rpm
Net Power	120 kW (161 hp / 163 ps) @ 1,850 rpm
Maximum Torque	830 N · m
Number of Cylinders	6
Aspiration	turbocharged
Displacement	9.7 L

TRANSMISSION

Transmission Type	Power shift
Maximum Travel Speed, fwd	10.6 km/h
Maximum Travel Speed, rev	13.6 km/h
Number of Speeds, fwd	3
Number of Speeds, rev	3

ELECTRICAL SYSTEM

System Voltage	24 V
----------------	------

UNDERCARRIAGE

Shoe Width	950 mm (1,100mm as options)
Number of Shoes per Side	42
Number of Upper Rollers per Side	2
Number of Bottom Rollers per Side	7
Shoe Ground Pressure	28.4 kPa

OPERATING WEIGHTS

Operating Weight with Ballast	18,700 kg
-------------------------------	-----------

BLADE PERFORMANCE

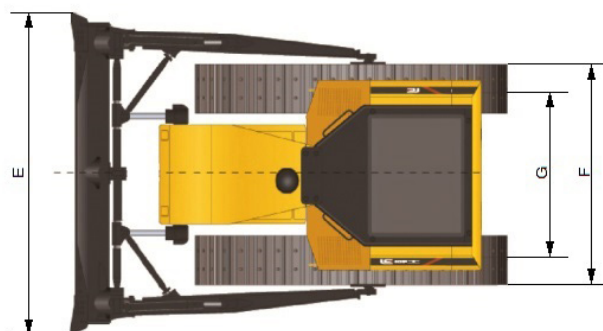
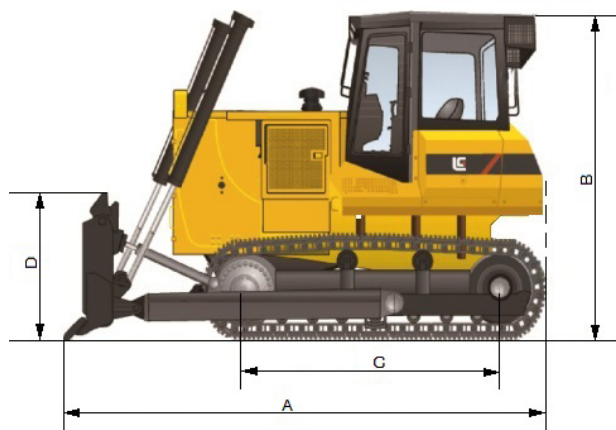
Blade Type (referenced)	Waste
Blade Capacity (referenced)	10.4 m³
Blade Width	4,200 mm
Blade Height	1,635 mm
Blade Depth below Ground	485 mm
Blade Lift above Ground	1,005 mm
Blade Tilt (left)	470 mm
Blade Tilt (right)	470 mm

SERVICE CAPACITIES

Fuel Tank	350 L
Engine Oil	24 L
Cooling System	45 L
Hydraulic System Total	108 L
Transmission and Torque Converter	122 L
Final Drives, each	74 L

DIMENSIONS

A Overall Length	5,295 mm
B Height to Top of Cab	3,200 mm
C Track Length on Ground	2,935 mm
D Blade Height	1,613 mm
E Blade Width	3,420 mm
F Width over Track	3,400 mm
G Track Gauge	2,300 mm
Ground Clearance	400 mm



Guangxi Liugong Machinery Co., Ltd.

No. 1 Liutai Road, Liuzhou, Guangxi 545007, PR China
T: +86 772 3886124 E: overseas@liugong.com
www.liugong.com

Specifications and designs are subject to change without notice. Machines shown may include optional equipment. Liugong standard and optional equipment may vary from region to region. Please consult your Liugong dealer for information specific to your area. Engine power kW is converted to horsepower (1 kW=1.3596 ps and 1 kW=1.3410 hp) in this file.

02/2021 Designed by LiuGong
Replace the previous versions of 07/2020